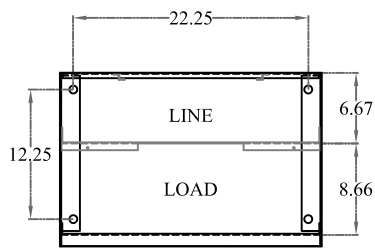


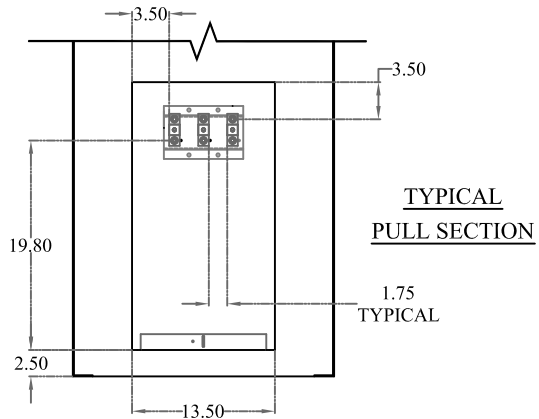
FRONT VIEW

FRONT VIEW  
LESS DOORS & COVERS

SIDE VIEW



PLAN VIEW



SPECIFICATIONS

- \* COMPLIES WITH EUSERC STANDARDS & DWG. 308
- \* 12 GA. NEMA 3R CONSTRUCTION
- \* POLYESTER POWDER-COATED FINISH EXCEEDS ASTM B-117 SPECIFICATIONS
- \* FABRICATED FROM CORROSION-RESISTANT ZINC COATED STEEL
- \* AVAILABLE IN ALUMINUM & STAINLESS STEEL

- \* LIGHT GREEN COLOR NO. 14672 PER FEDERAL SPECIFICATIONS 595 -
- \* ALL FACTORY WIRING 600 VOLT RATED COPPER
- \* ALL COMPONENTS UL LISTED
- \* ALL EXTERIOR DOORS AND COVERS PADLOCKABLE
- \* UTILITY COVERS SEALABLE