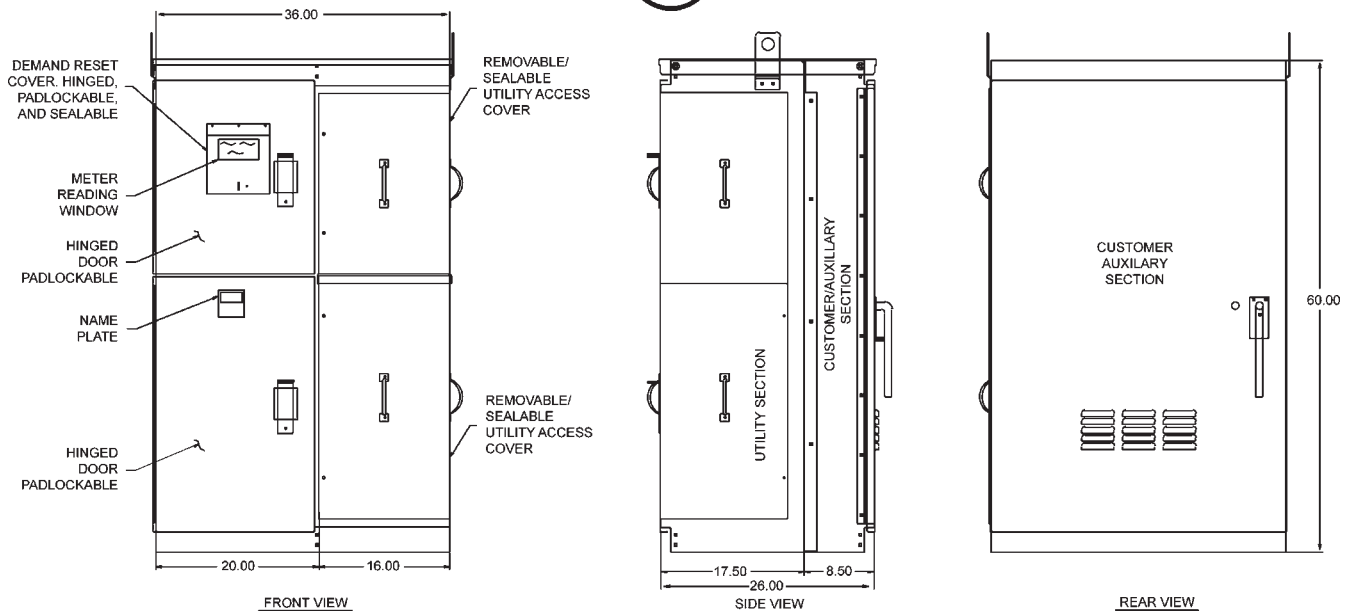




ME400 SERIES

Service Pedestal

Designed to supply metered/unmetered power to remote locations.
 Typical applications include street lighting, parking lot lighting, and ball park lighting.



STANDARD FEATURES

- Standard voltage: 120/240VAC 1Ø 3W.
- Utility termination studs.
- Utility test section.
- Meter socket 4J: 400A maximum, 320A continuous.
- Meter socket with by-pass facilities.
- Main breaker 400A maximum @ 10KAIC.
- Load center 30 circuits 400A 1Ø 3W.
- Vandal-resistant hinged door and deadfronts.
- ASA-61 grey, powder coat finish in accordance with ASTM B-117.

OPTIONAL FEATURES

- Main disconnect: Class T fuse pullout.
- Load center may be increased to 42 circuits.
- Main breaker: Higher AIC available for series rating.
- Photocell, selector switch and contactor may be added to standard.
- Stainless or aluminum enclosure available.
- Anchor bolts.
- Some equipment modifications available. Consult factory representative.
- 240/480V 1Ø 3W available.
- Various paint colors are available.

SPECIFICATIONS

- 12 gauge corrosion-resistant zinc coated steel construction. Hood and covers 14 gauge.
- Rainproof type 3R construction.
- Meets EUSERC 308, 345 & 347 requirements.
- Full height and width auxiliary section in rear of cabinet. Provided with key lock and padlockable handle.
- All factory wiring is 600 volt rated copper.
- All components are UL Listed.

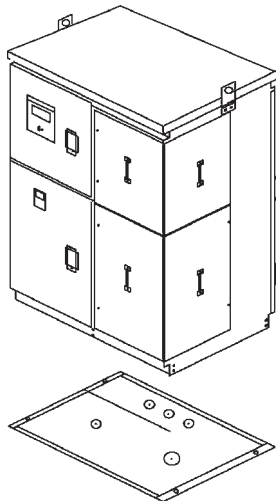
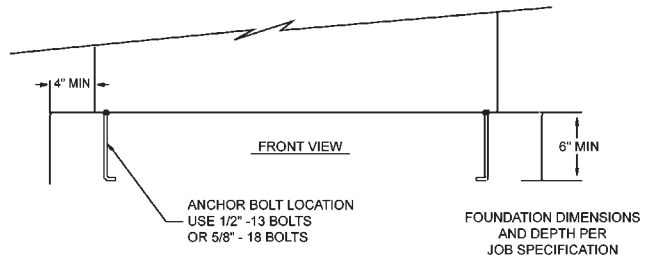
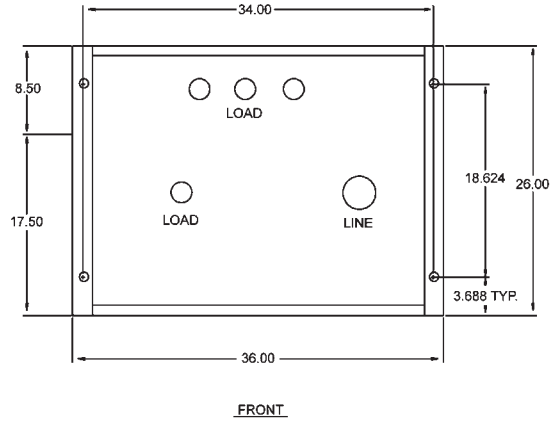
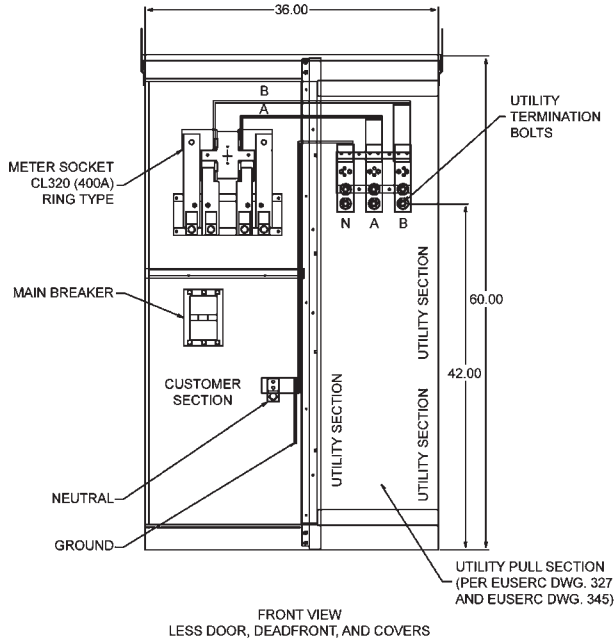
ORDERING INFORMATION

Catalog No.	Voltage	Load Center	No. of Circuits	Enclosure	Color
	-		-		-

<u>Catalog No.</u>	<u>Voltage</u>	<u>Load Center</u>	<u>No. of Circuits</u>	<u>Enclosure</u>	<u>Color</u>
ME-M400	1 120/240V, 1ø	P Plug-in	24	S Steel	G Grey
ME-F400	2 240/480V, 1ø	B Bolt-on	30	A Aluminum	C Custom
ME-M300			42	X Stainless	(Please specify)
ME-F300					

Example: ME-M400-1-P-24-S-G

NOTE: M - Circuit Breaker Main
F - Fuse Disconnect Main



Tel: 866-MY-MYERS Fax: 951-520-1961
www.myerspowerproducts.com

Specifications are subject to change without notice to reflect improvements and upgrades.